

NEW

LED High Bay TRIANO XL Series 3405...



Application:

Production areas and warehouses, maintenance and assembly shops, cool storage facilities, walkways in rack areas, hardware stores etc.

Design:

LED-housing: Robust four-part extruded aluminium housing with cooling fins, LED-modules and flat safety glasses (IK 09)
All case parts powder coated in DB702N (mica-iron)

Optic: Lens optics with narrow-wide beam (TB), narrow beam (T) or wide beam (without optics).

Connection: Preinstalled 3-pole plug-type connector. Plug mounted to the housing. Socket included

Mounting: 1-point suspension, eyelet included.

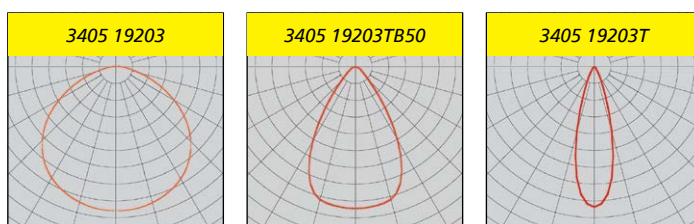
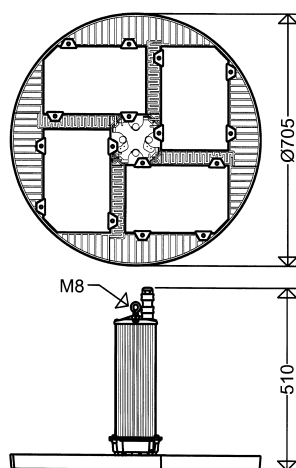


Technical Data:

LED: Highpower-LED 4,000K, $R_a > 80$, (T-version $R_a > 70$) lifetime $L_{80B_{10}} > 50.000h$ at max. ambient temperature (see notes).

ECG: 220-240V, 50-60Hz. Due to the inrush current of the electronic ballasts, the maximum permissible number of light fittings per circuit breaker is limited. Overvoltage protection, excess temperature protection-, overload and short circuit protection.

Ambient temperature: -20°C up to +40°C

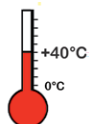


Options:

- 5,700K ($R_a > 70$)
- dimmable via DALI interface (DIMD)
- PC cover for applications in food industry areas (IFS)
- ∇-sign for locations with increased fire risk (D)
- light output reduction (LR) per 230V control line (dimmable)
- uniform luminous flux option (CL) to keep the light output on same level for the whole life cycle

SCHUCH Quality - your advantage:

- efficient 1 : 1 - substitute for conventional high bay floodlights with 1,000W high pressure lamps
- fast and easy mounting and commissioning due to 1-point suspension and plug-in connection (Plug & Play)
- optimized thermal management due to segmentation of the LED modules and direct mounting to the housing, intelligently arranged cooling system, huge heat sink, excellent heat dissipation,
- high expectancy of system life $L_{80B_{10}} > 50,000$ hours, even at permissible ambient temperatures of +40°C
- colour reproduction $R_a > 80$, according to the workplace guide lines suitable for nearly all plant locations
- uniform illumination due to the „Multi-Layer Technology“ i.e. every individual LED illuminates the whole surface, the light curves of the individual LED are overlapping.



Notes:

Limitations for LED-light fittings: See chapter „Use of LED lighting in corrosive atmospheres“ in the Technical Appendix.

All technical data is relevant at the time of print. Actual technical data can be found in the internet under www.schuch.de.

Article no.	Type	Power consumption [W] *	Luminous flux [lm] *	Light output [lm/W]	Wide beam	Narrow-wide beam	Narrow beam	Energy efficiency class	Substitute for **	Weight [kg] (without packing material)
-------------	------	-------------------------	----------------------	---------------------	-----------	------------------	-------------	-------------------------	-------------------	--

3405...



34010 0301	3405 19203	411	47.700	116	•			A+	HME 1.000	20,4
34010 0302	3405 19203TB50	411	47.470	115		•		A+	HME 1.000	20,4
34010 0303	3405 19203T	411	48.650	118			•	A+	HME 1.000	20,4

* see notes

** The given information is for rough orientation only. In each individual case a lighting calculation is necessary. (VG = ballast)

Accessories / Spare Parts

Type	Article no.	
34011 9011	3405/010	spare safety glass, for BR 3301... or 3302...